

THE GLOW™ PACKAGE TEMPLATE

————— **Bleed Line (4.42”w x 5.52”h)**

All background artwork should extend to this line
(0.1” outside the Die Line)

- - - - - **Die Line (4.21”w x 5.31”h)**

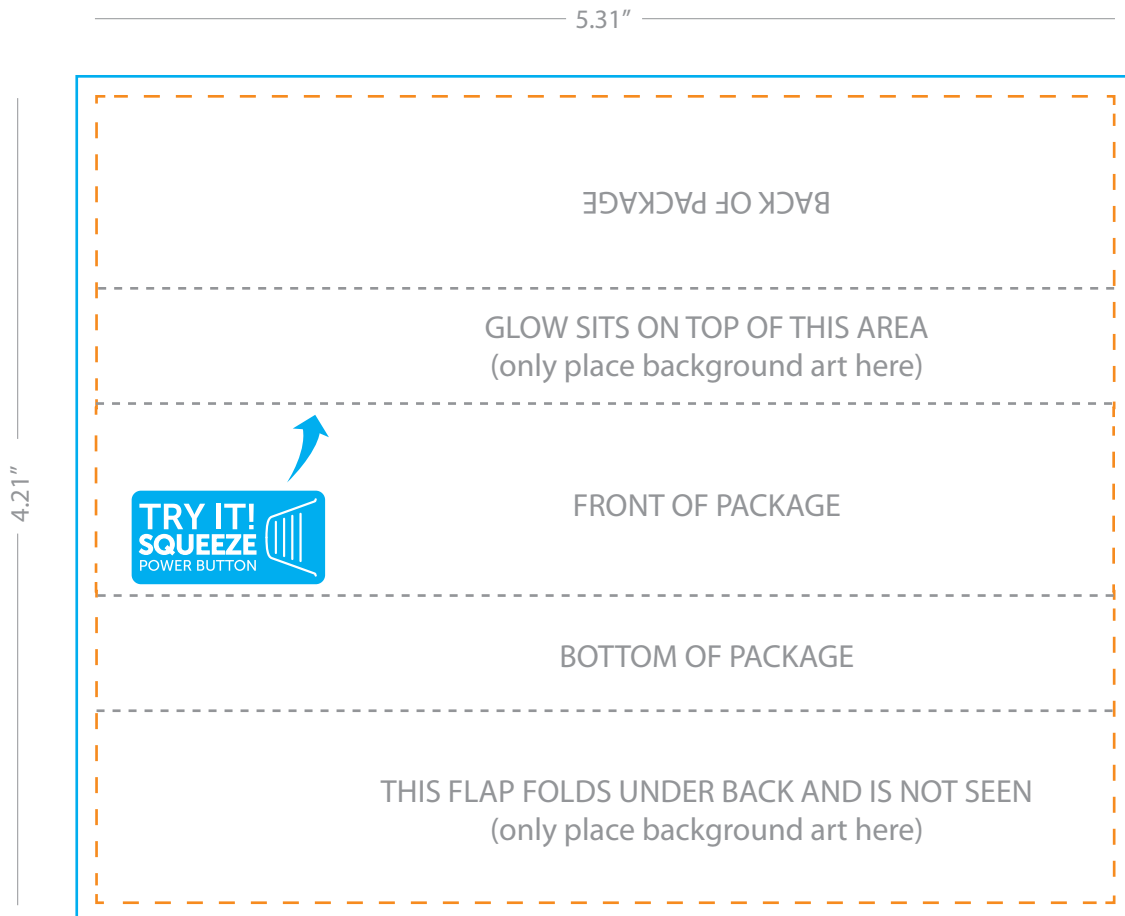
Visual Portion of what will show in Glow™ packaging.

----- **Fold Lines**

Shows where packaging will be folded.

NOTE:

- “Try it!” Artwork is optional and can be removed.



COMMENTS:

All raster-based artwork should be at least 300 dpi. When sending vector artwork (Adobe Illustrator, Corel Draw, Macromedia Freehand) please convert all type to paths or outlines or include the printer and screen font files.