



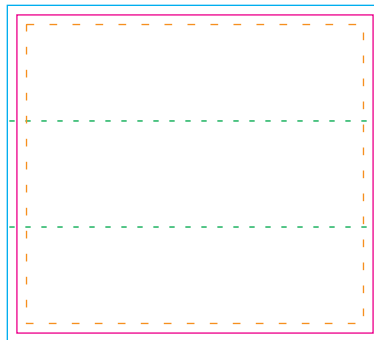


Full Color Applique

-  **Bleed Line (1.955" x 1.757")**
All full color background artwork should extend to this line (0.05" outside the Die Line)
-  **Die Line (1.855" x 1.657")**
Actual appliqué shape
-  **Imprint Area (1.755" x 1.557")**
All important text/logos/info need to stay inside this line (0.1" inside of the Die Line)
-  **Side View**
approximates view of a single side of the pen



COMMENTS:

All raster-based artwork (JPEG, TIFF, EPS, PSD, etc.) should be at least 300 dpi. When sending vector artwork (Adobe Illustrator preferred when possible) please convert all type to paths or outlines or include the printer and screen font files.

EXAMPLE:

